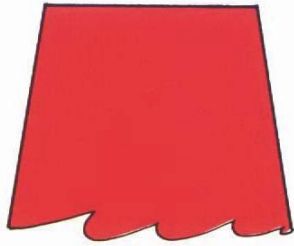


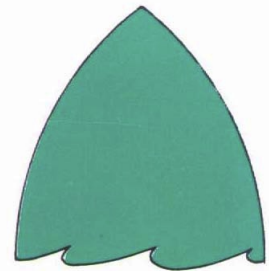
**IALA SYSTEM 'A' – LATERAL MARKS USED IN WESTERN EUROPE**



**PORT SIDE**  
 Light is Red  
 Shape – Can  
 Indicates safe water to its Right



Direction of Shipping  
 (Welcome)



**STBD SIDE**  
 Light is Green  
 Shape – Conical  
 Indicates safe water to its Left

*Red & Green Stay Between*

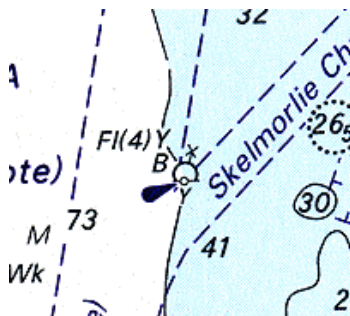


Symbols Found on Charts



**SPECIAL MARKS**

Light is Yellow  
 Shape – Spar, Buoy, Can, Cone  
 Diagonal Cross on top  
 Used to mark something of note, e.g. fish farms, cables etc.

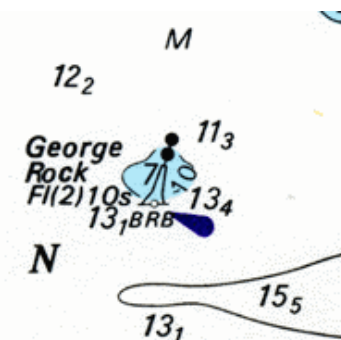


Symbols Found on Charts

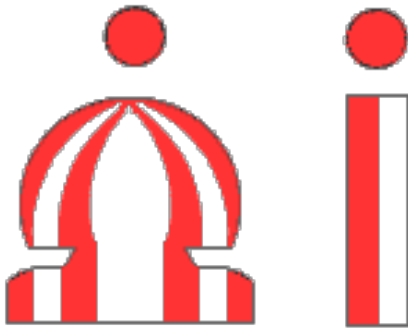
**ISOLATED DANGER**

Light Group Flash (2) White  
 Shape – Spar or Buoy  
 Indicates safe water around the isolated danger

*Red & Black Stay Back*

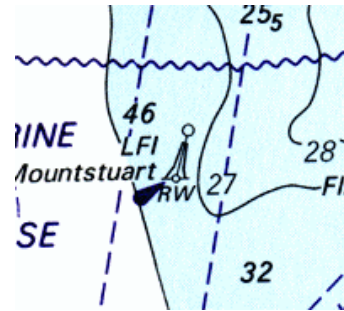


**OTHER LATERAL MARKS & BUOYS YOU MAY SEE**



**SAFE WATER MARK**

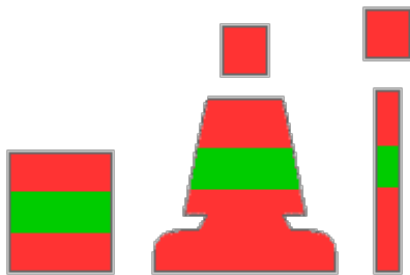
Light is White  
 (Can be Isophase – Equal)  
 (Or Occulting – More Light)  
 Shape – Spar or Buoy



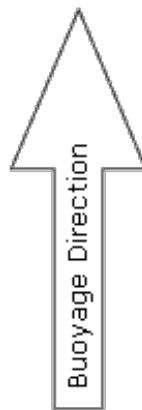
Symbol  
 Found on  
 Chart

*Red & White is Alright*

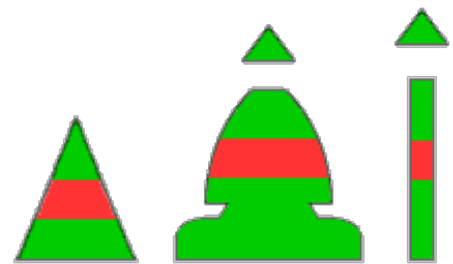
Preferred Channel To Starboard



Light Red Flashing (2+1)  
 Shape – Spar or Buoy  
 Indicates safe water to the  
 far right of the mark



Preferred Channel To Port



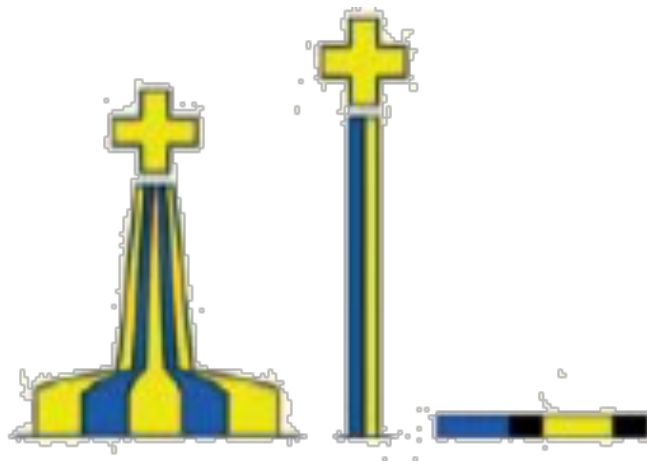
Light Green Flashing (2+1)  
 Shape – Spar or Buoy  
 Indicates safe water to the  
 left of the mark

## LATEST BUOY INTRODUCED BY TRINITY HOUSE

Following successful trials Trinity House has introduced a new emergency wreck marking buoy. This is designed to provide high visual and radio/radar recognition. It is intended that such wreck marking buoys should be maintained in position only until appropriate Lateral or Cardinal buoys can be deployed. The buoy has the following characteristics:

- A pillar or spar buoy, with size dependant on location.
- Coloured in equal number and dimensions of blue and yellow vertical stripes (minimum of 4 stripes and maximum of 8 stripes).
- Fitted with an alternating blue and yellow flashing light with a nominal range of 4 nautical miles (the range may be altered depending on local conditions) and the blue and yellow 1 second flashes are alternated with an interval of 0.5 seconds.
- If multiple buoys are deployed then the lights will be synchronised.
- The top mark, if fitted, is to be a standing/upright yellow cross.

Recently one was deployed over the wreck of FV Pamela in Carmarthen Bay.



*Yellow & Blue You're in The Poo*

### **EMERGENCY WRECK BUOY**

Lights are Blue & Yellow

(Alternating 1 sec Flash Blue/Yellow with 0.5 second interval)

Shape – Spar or Buoy

## CARDINAL MARKS

Cardinal marks are used to indicate direction of safe water. It may also indicate the split in a channel and even provide an aiming point (but don't go past it!!) There are various ways of recognising them. The first method is by identifying the cones placed on the top of the buoys, for example the North and South buoys cones point to their respective directions, i.e. North is up, South is down. The West, some say looks like a Slim Waist west, i.e. West. For the East the cones combined can look a bit like an Egg, i.e. Easter Egg 'E' for East.

The other ways of recognising cardinals is via their colour markings. This can be very useful when navigating on a bright day. Sometimes you may only be able to see the colours and not the top marks, on average you can see the shapes from about 200mts, whereas their colours about 2 miles! There is a very easy way of remembering this; the black stripe will coincide with the shapes on the top, e.g. the North Cardinal's top marks point to the top, the same as it's black band does...

The lights are even easier as they are similar to that of a clock. If the colour is not stipulated, Fl R it must be White.

### *Arrows up, Black Strip at the Top Continuously Flashing (White)*

**Lights:**

*VQ = Very Quick Flashing*

*Q = Quick Flash*

*LFl = Long Flash*



Q or VQ Flashing



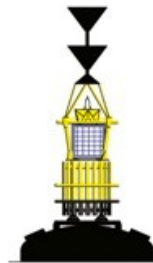
Q9 15s or VQ9 10s

*Slim Waist – Needs a Belt For Trousers  
Flashes 9 Times (White)*



Q3 10s or VQ3 5s

*Cadbury Cream Egg – Yolk in the Middle  
Flashes 3 Times (White)*



Q6+LFl 15s or VQ6+LFl 10s

*Arrows Down, Black Strip at the Bottom  
Flashes 6 Times (White)*

Note: When counting light timings

# INTERNATIONAL ASSOCIATION OF LIGHTHOUSE AUTHORITIES (IALA) BOUYAGE SYSTEM REGION A

